

CANDLEWOOD LAKE

UNIT II

110263

DESCRIPTION

SITUATED IN the Township of Congress, County of Morrow, and State of Ohio, being a part of Section 8 Township 18, Range 20, containing 151.309 acres in Unit II.

SURVEYOR'S CERTIFICATION

I HEREBY CERTIFY that the within plat of Unit II, Candlewood Lake was prepared by the office of George W. Raika, Inc., Consulting Engineers and Donald S. Vermilya, Registered Surveyor.

All bearings were computed from a magnetic bearing taken on June 29, 1971 and all distances are in feet and decimals thereof.

Donald S. Vermilya
Registered Surveyor No. 5095

DECLARATION AND DEDICATION

We do hereby certify that we are the owners of the land shown on the above plat and we do certify that we have caused the survey and subdivision thereof to be made as shown on the above plat and to be known as "Candlewood Lake Subdivision" Unit II, lots 1-400 and A-F, inclusive in the Township of Congress, Morrow County, Ohio, and acknowledge said survey to be correct to the best of our knowledge and belief, and we hereby dedicate those State, County and Township Roads labeled on the map. The streets within the plat labeled "private street" are hereby reserved for the use of all public utility companies.

OWNER'S ACKNOWLEDGMENT

BE IT REMEMBERED that Whetstone Development, Inc., a Delaware Corporation, owner of the lands shown on the attached plat, do hereby acknowledge the making of said plat to be its voluntary act and deed.

Witnesses
Whetstone Development, Inc.
By *Fred L. Grider*
VICE-PRESIDENT
By *E. E. Augustein*
ASST. SECTY.

STATE OF OHIO
COUNTY OF MORROW SS

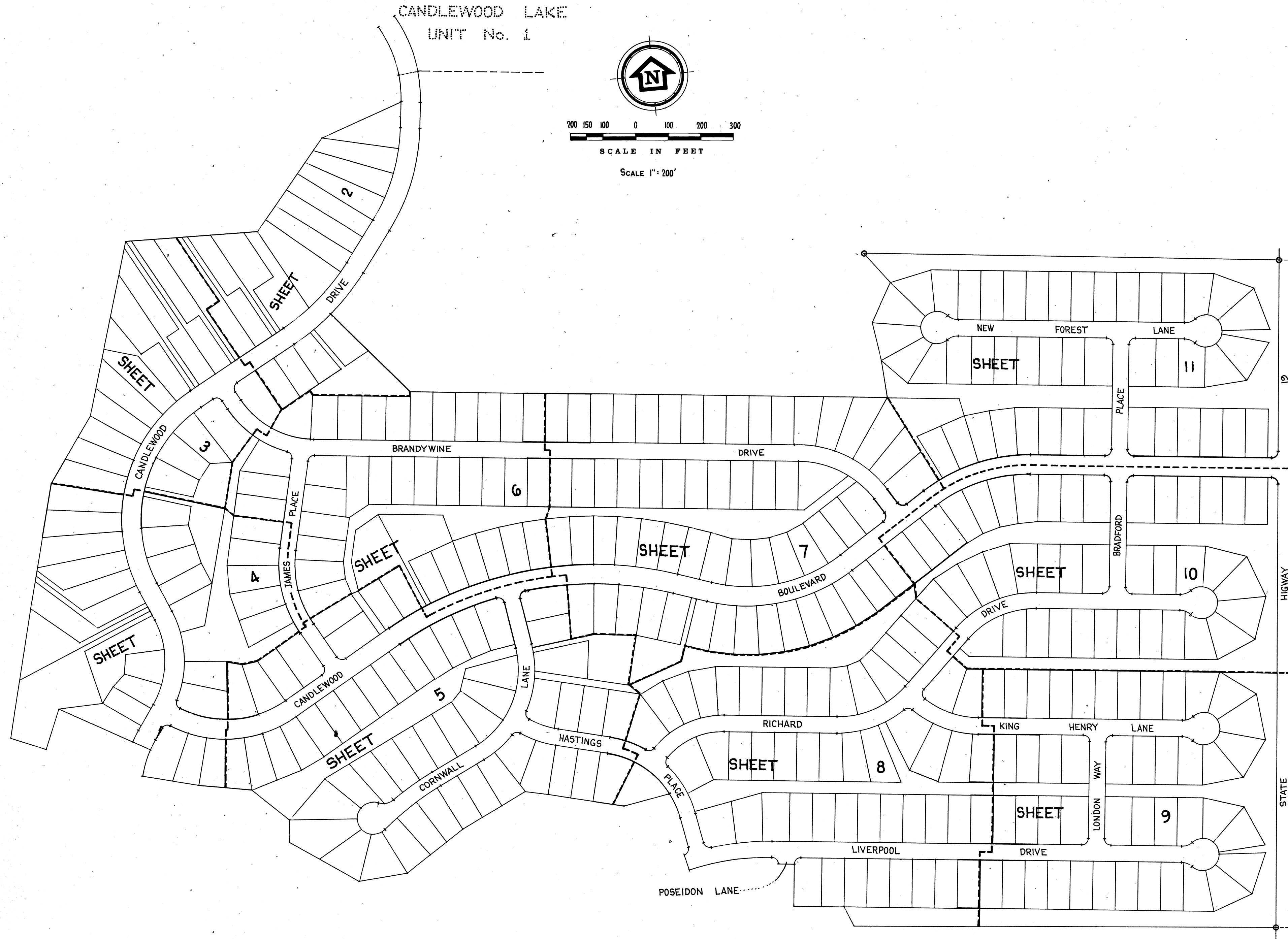
Before me, a notary public, in and for said county, personally appeared FRED L. GRIDER, VICE-PRESIDENT and E. E. AUGUSTEIN, ASST. SECTY. of Whetstone Development, Inc., the corporation which executed the foregoing Owner's Acknowledgment, who acknowledged that the seal affixed to said instrument is the corporate seal of said corporation; that they did sign and seal said instrument as such VICE-PRES. and ASST. SECTY. in behalf of said corporation and by authority of its board of directors; and that said instrument is their free act and deed individually and as such VICE-PRES. and ASST. SECTY. and the free and corporate act and deed of said Whetstone Development, Inc.

IN TESTIMONY WHEREOF I have hereunto subscribed my name and affixed my official seal at MT. GILEAD, OHIO, this 28TH day of APRIL, 19 72.

Daphne Nettles
Notary Public

My Commission Expires April 9, 1975

CANDLEWOOD LAKE
UNIT No. 1



ALL PROPERTY CORNERS
MARKED BY IRON PINS
CONCRETE MONUMENT

PRESENTED TO MORROW COUNTY COMMISSIONERS

THE WITHIN PLAT was presented to the Board of Morrow County Commissioners for their approval on May 1, 1972.

MORROW COUNTY COMMISSIONERS
Robert Rhoadbeck
John Shade
F. F. Bolinger
Elaine Keenan
Clerk

APPROVAL OF MORROW COUNTY COMMISSIONERS

I HEREBY CERTIFY that this plat was approved by the Morrow County Commissioners at a Regular meeting held May, 19 72.

MORROW COUNTY COMMISSIONERS
Robert Rhoadbeck
John Shade
F. F. Bolinger
Elaine Keenan
Clerk

APPROVAL OF MORROW COUNTY BOARD OF HEALTH

I HEREBY CERTIFY that this plat was approved by the Morrow County Board of Health at a regular meeting held APRIL 27, 19 72.

William Schick
(TITLE)
SANITARIAN
(TITLE)

APPROVAL OF MORROW COUNTY REGIONAL PLANNING COMMISSION

I HEREBY CERTIFY that the within plat was approved by the Morrow County Regional Planning Commission at a REGULAR meeting held APRIL 27, 19 72.

Merrill Kack
(TITLE) CHAIRMAN
William Schick
(TITLE) SECRETARY

APPROVAL OF MORROW COUNTY ENGINEER

I HEREBY APPROVE the within plat of Candlewood Lake, Congress Township, Morrow County, Ohio, this 27 day of Apr, 19 72.

Justin Corley
Morrow County Engineer

AUDITOR'S CERTIFICATION

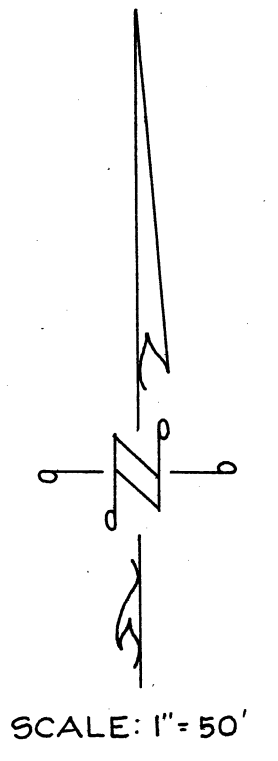
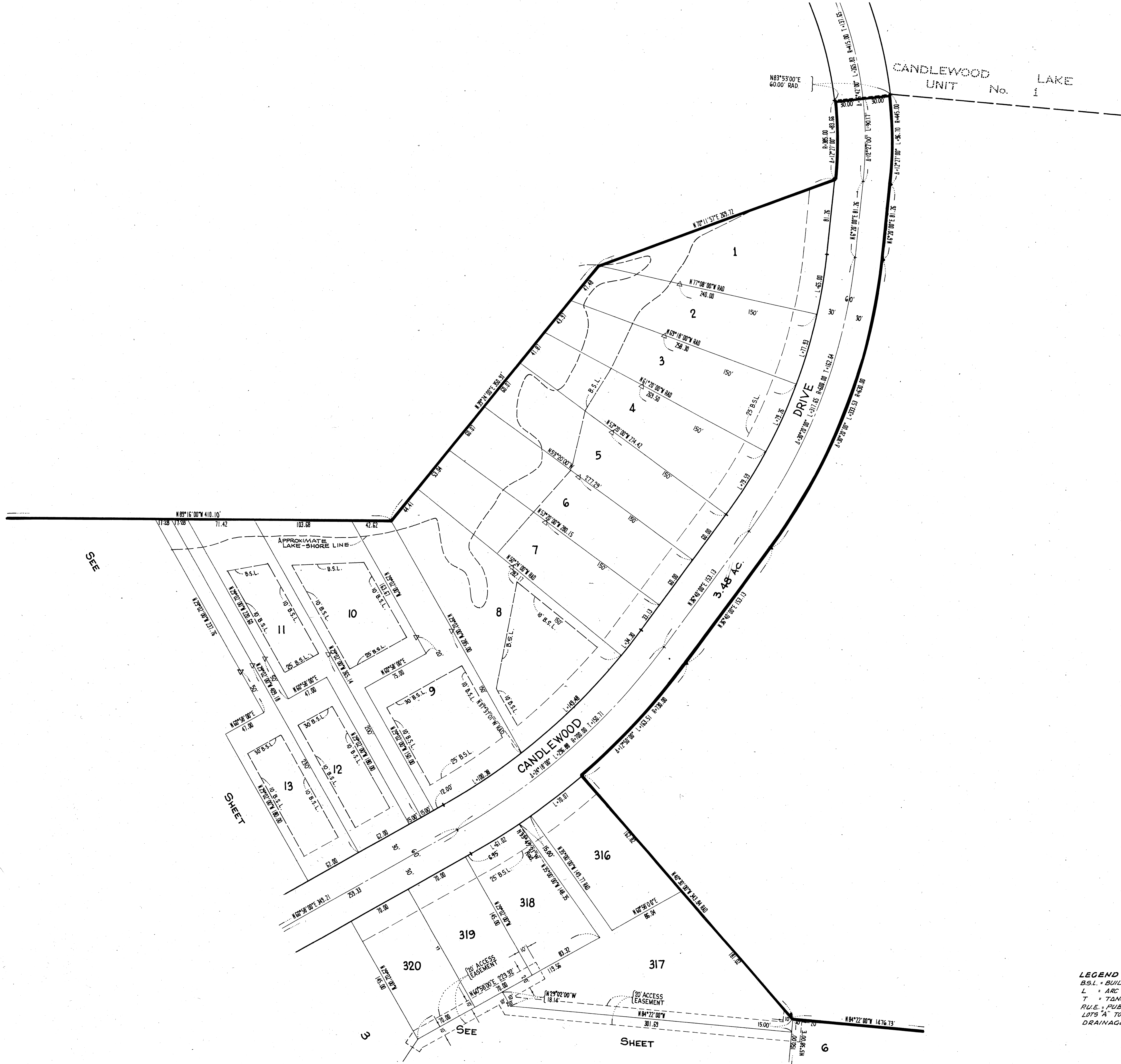
I HEREBY CERTIFY that there are no delinquent or unpaid taxes of record upon the above described property as of the date of transfer.

TRANSFERRED MAY 1ST, 19 72.
Merrill Corwell
Morrow County Auditor

RECORDER'S CERTIFICATION

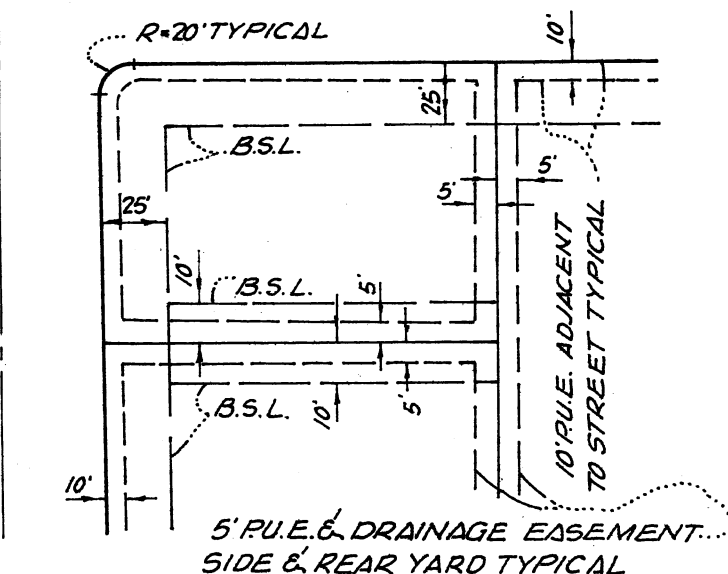
HEREBY CERTIFY that the within plat was filed 12:10 o'clock May 1, 19 72, in Candlewood Lake Plat Book, Pages 1 to 11 inclusive of the Morrow County Records.

FEE 77.00
Nancy Thompson
Morrow County Recorder



NOTE:
 1. REAR LOT PINS WERE NOT SET AT THE REAR OF LOTS INCLUSIVE.
 2. WITNESS POINTS WERE SET AS SHOWN Δ 150' FROM THE FRONT LOT CORNER, EXCEPT WHERE NOTED.
 3. THE LAKE LINE SHOWN IS FOR A NORMAL WATER SURFACE AT ELEVATION 1205 BASED UPON APRIL 1971 TOPOGRAPHY COMPILED BY HENDERSON AERIAL SURVEYS OF OHIO.

PRIVATE STREETS EXCEPT WHERE NOTED



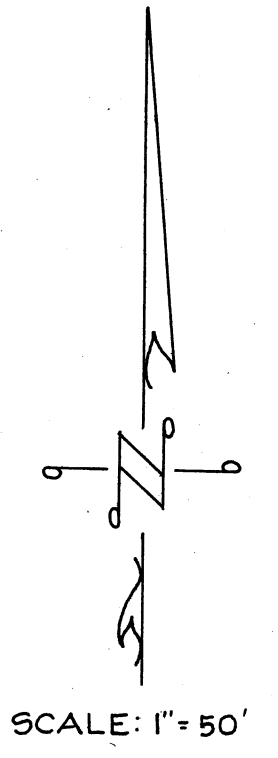
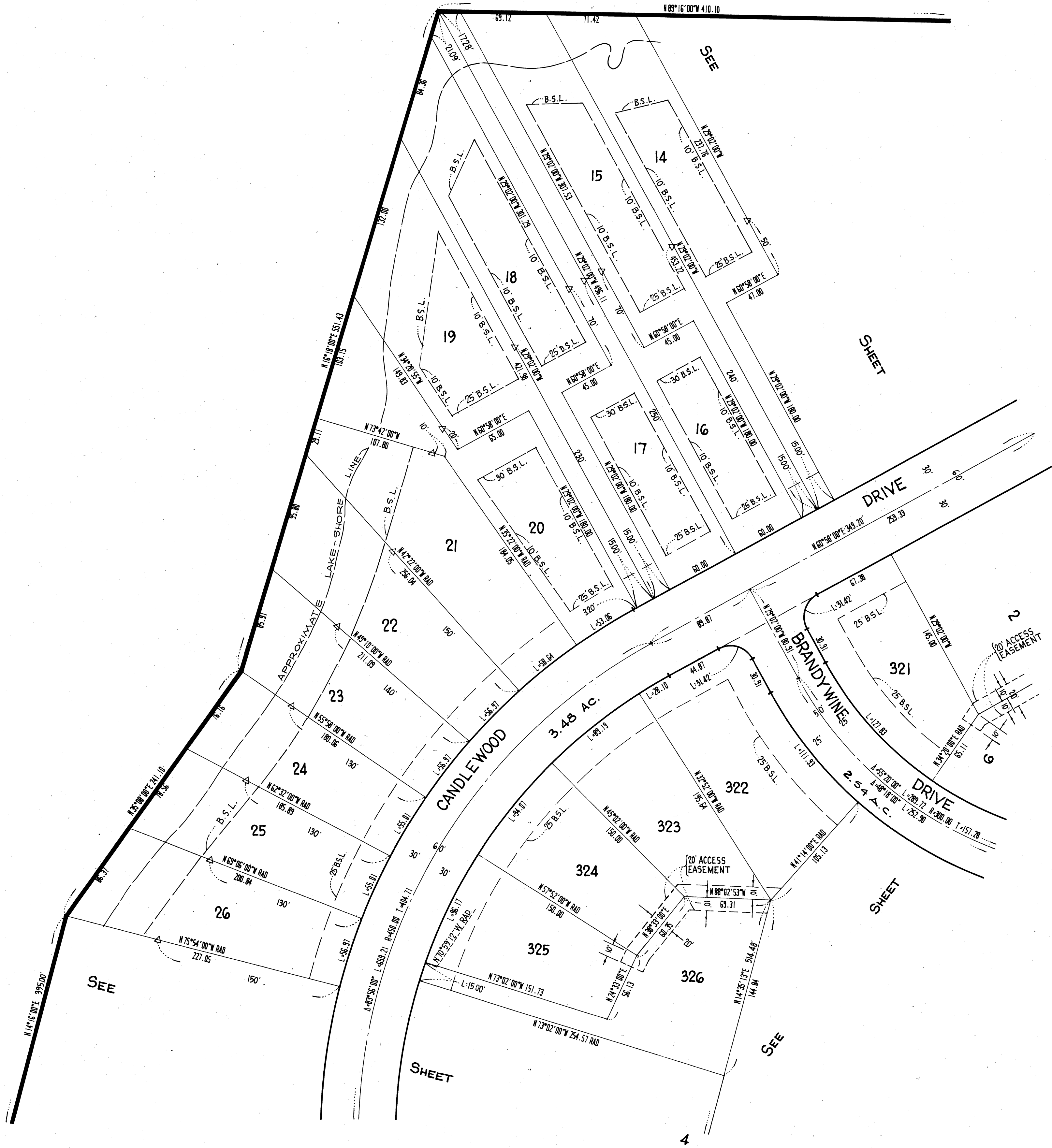
THE STREETS WITHIN THE SUBDIVISION ARE RESERVED FOR THE USE OF ALL PUBLIC UTILITY COMPANIES.

TYPICAL FRONT AND SIDERYARD SETBACK AND P.U.E. DETAIL (NO SCALE)

CANDLEWOOD LAKE UNIT No 2

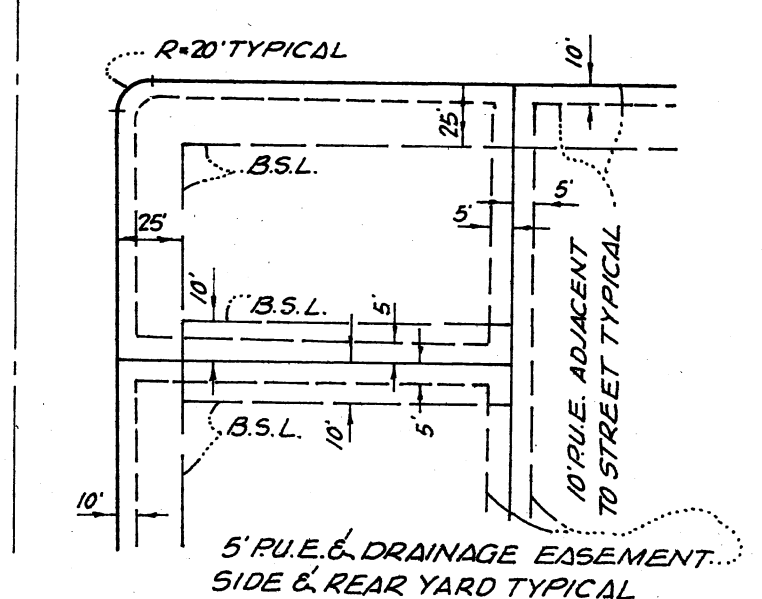
LEGEND
 B.S.L. - BUILDING SETBACK LINE.
 L - ARC LENGTH
 T - TANGENT LENGTH
 P.U.E. - PUBLIC UTILITY EASEMENT.
 LOTS "A" TO "P" INCLUSIVE ARE SUBJECT TO DRAINAGE EASEMENTS IN THEIR ENTIRETY.

BEING A SUBDIVISION OF PORTIONS OF SECTION 8 TOWNSHIP 13 RANGE 20 CONGRESS TOWNSHIP IN THE COUNTY OF MORROW, STATE OF OHIO.



NOTE:
 1. REAR LOT PINS WERE NOT SET AT THE REAR OF LOTS INCLUSIVE.
 2. WITNESS POINTS WERE SET AS SHOWN & 150' FROM THE FRONT LOT CORNER, EXCEPT WHERE NOTED.
 3. THE LAKE LINE SHOWN IS FOR A NORMAL WATER SURFACE AT ELEVATION 1205 BASED UPON APRIL 1971 TOPOGRAPHY COMPILED BY HENDERSON AERIAL SURVEYS OF OHIO.

PRIVATE STREETS EXCEPT WHERE NOTED



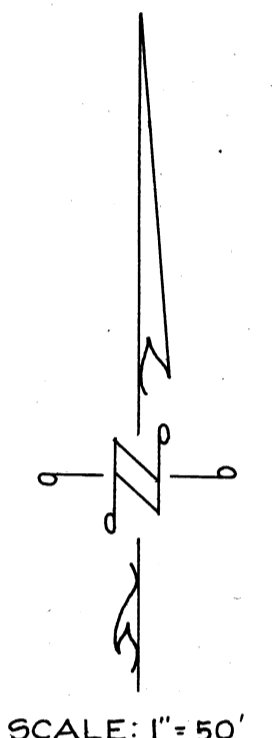
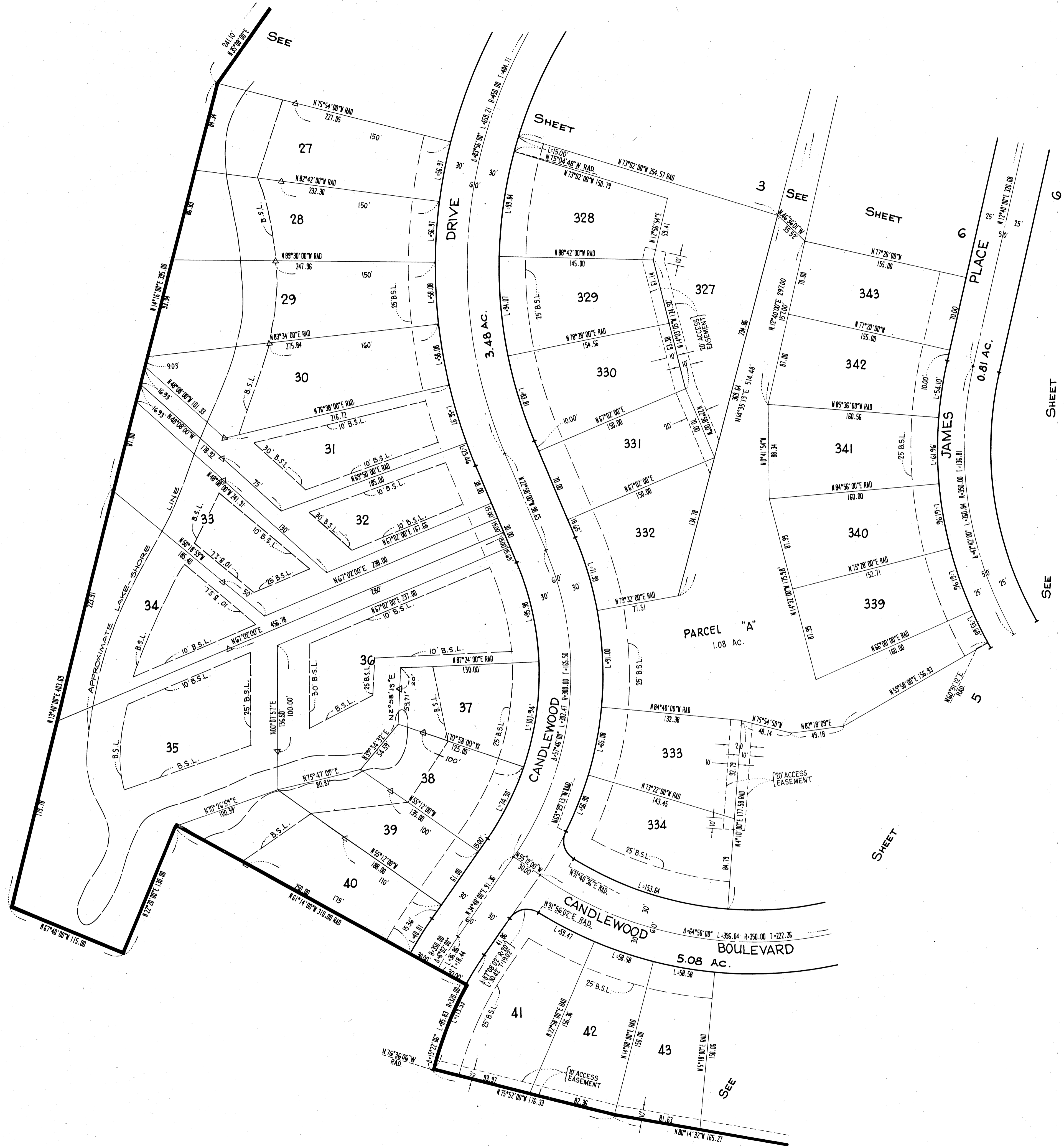
THE STREETS WITHIN THE SUBDIVISION ARE RESERVED FOR THE USE OF ALL PUBLIC UTILITY COMPANIES.

TYPICAL FRONT AND SIDERYARD SETBACK AND P.U.E. DETAIL (NO SCALE)

CANDLEWOOD LAKE UNIT # 2

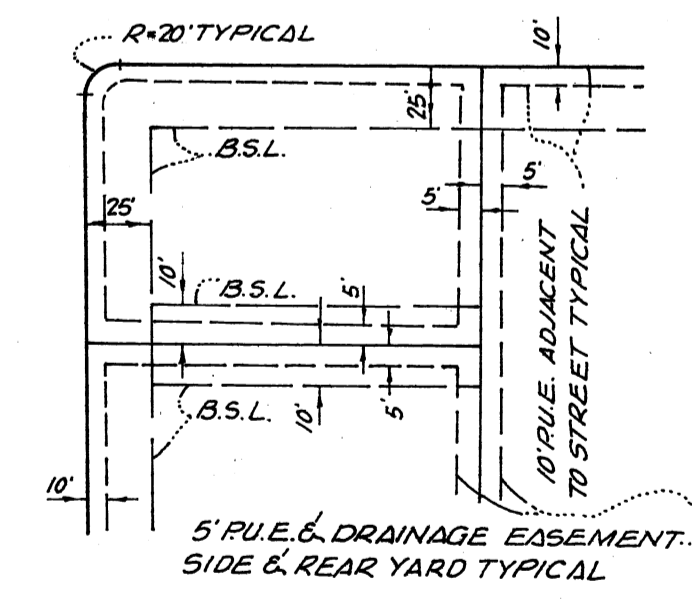
LEGEND
 B.S.L. - BUILDING SETBACK LINE.
 L - ARC LENGTH
 T - TANGENT LENGTH
 P.U.E. - PUBLIC UTILITY EASEMENT.
 LOTS "A" TO "P" INCLUSIVE ARE SUBJECT TO DRAINAGE EASEMENTS IN THEIR ENTIRETY.

BEING A SUBDIVISION OF PORTIONS OF SECTION 8 TOWNSHIP 18 RANGE 20 CONGRESS TOWNSHIP IN THE COUNTY OF MORROW, STATE OF OHIO.



NOTE:
 1. REAR LOT PINS WERE NOT SET AT THE REAR OF LOTS INCLUSIVE.
 2. WITNESS POINTS WERE SET AS SHOWN & 150' FROM THE FRONT LOT CORNER, EXCEPT WHERE NOTED.
 3. THE LAKE LINE SHOWN IS FOR A NORMAL WATER SURFACE AT ELEVATION 1205 BASED UPON APRIL 1971 TOPOGRAPHY COMPILED BY HENDERSON AERIAL SURVEYS OF OHIO.

PRIVATE STREETS EXCEPT WHERE NOTED



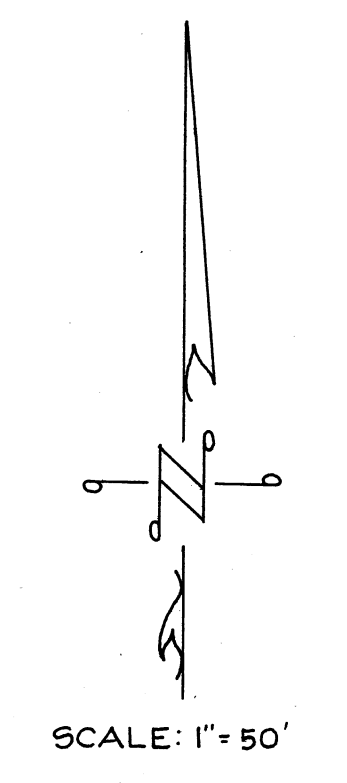
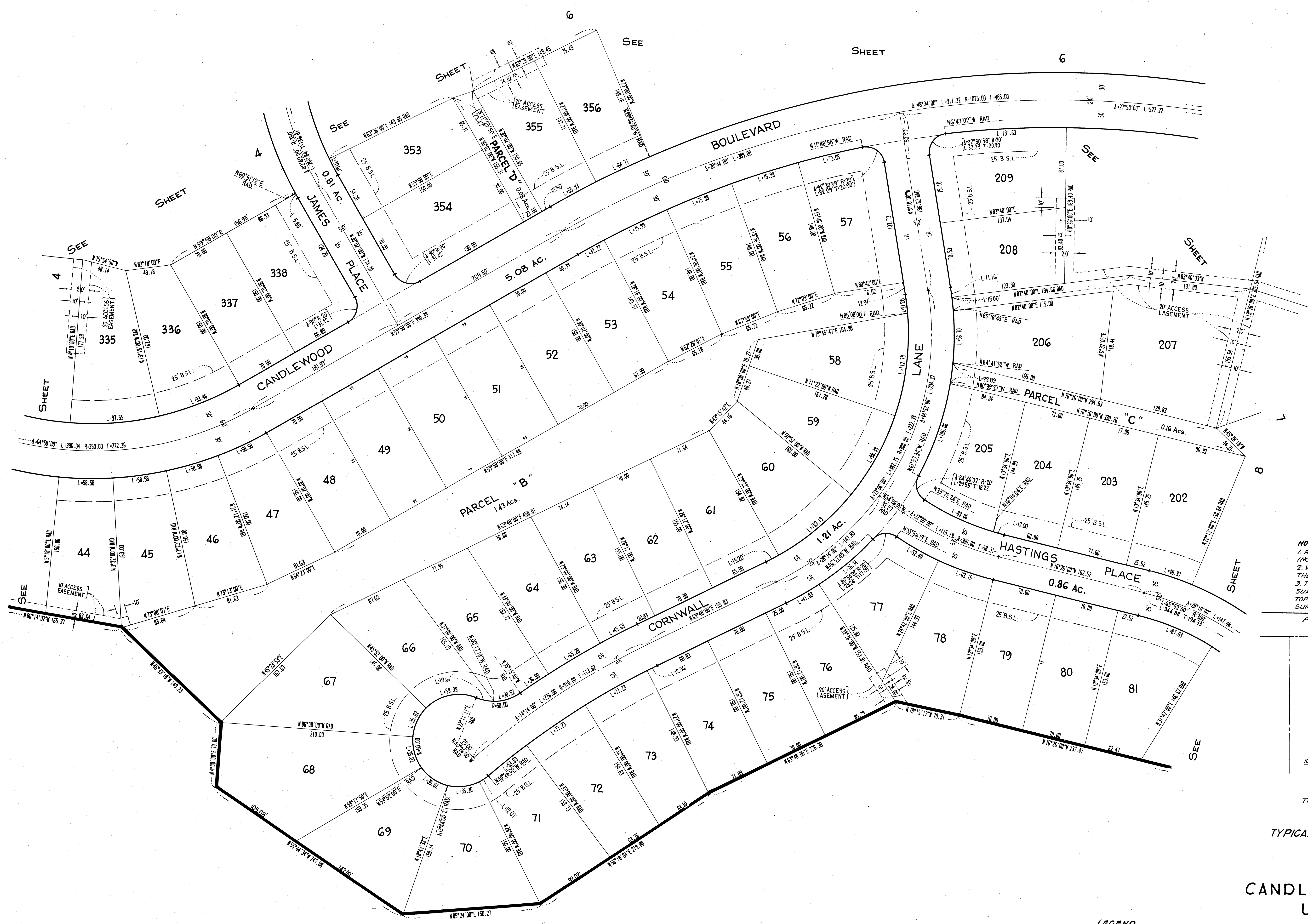
THE STREETS WITHIN THE SUBDIVISION ARE RESERVED FOR THE USE OF ALL PUBLIC UTILITY COMPANIES.

TYPICAL FRONT AND SIDEYARD SETBACK AND P.U.E. DETAIL (NO SCALE)

CANDLEWOOD LAKE UNIT No 2

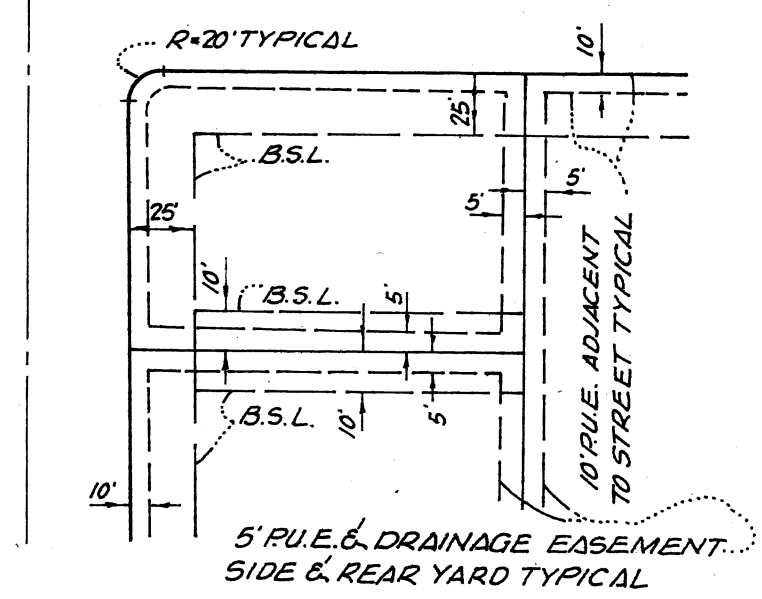
LEGEND
 B.S.L. = BUILDING SETBACK LINE.
 L = ARC LENGTH
 T = TANGENT LENGTH
 P.U.E. = PUBLIC UTILITY EASEMENT.
 LOTS "A" TO "D" INCLUSIVE ARE SUBJECT TO DRAINAGE EASEMENTS IN THEIR ENTIRETY

BEING A SUBDIVISION OF PORTIONS OF SECTION 8 TOWNSHIP 18 RANGE 20 CONGRESS TOWNSHIP IN THE COUNTY OF MORROW, STATE OF OHIO.



NOTE:
 1. REAR LOT PINS WERE NOT SET AT THE REAR OF LOTS INCLUSIVE.
 2. WITNESS POINTS WERE SET AS SHOWN & 150' FROM THE FRONT LOT CORNER, EXCEPT WHERE NOTED.
 3. THE LAKE LINE SHOWN IS FOR A NORMAL WATER SURFACE AT ELEVATION 1205 BASED UPON APRIL 1971 TOPOGRAPHY COMPILED BY HENDERSON AERIAL SURVEYS OF OHIO.

PRIVATE STREETS EXCEPT WHERE NOTED



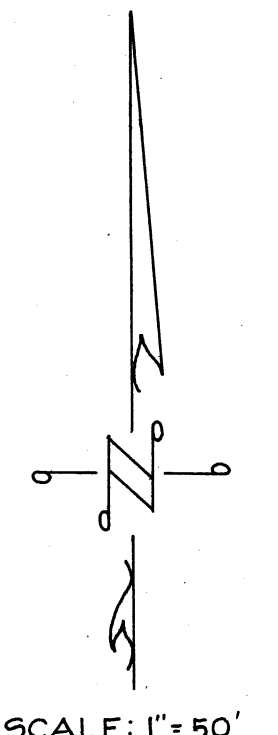
THE STREETS WITHIN THE SUBDIVISION ARE RESERVED FOR THE USE OF ALL PUBLIC UTILITY COMPANIES.

TYPICAL FRONT AND SIDEYARD SETBACK AND P.U.E. DETAIL (NO SCALE)

CANDLEWOOD LAKE UNIT No. 2

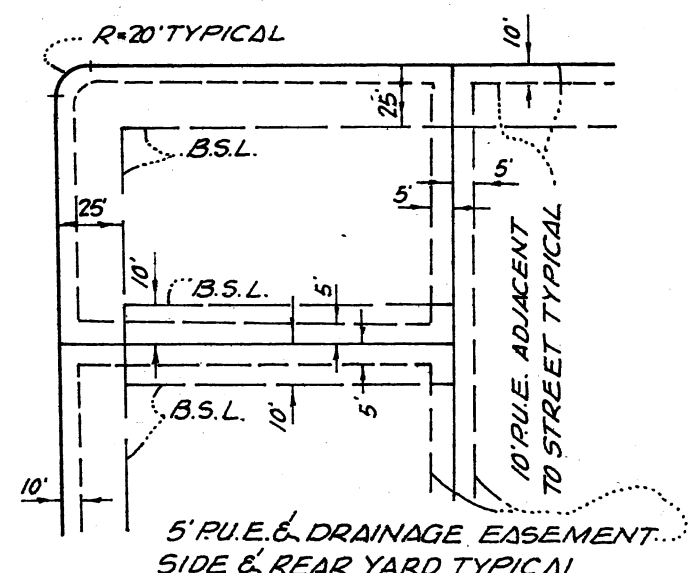
LEGEND
 B.S.L. = BUILDING SETBACK LINE.
 L = ARC LENGTH
 T = TANGENT LENGTH
 P.U.E. = PUBLIC UTILITY EASEMENT
 LOTS "A" TO "P" INCLUSIVE ARE SUBJECT TO DRAINAGE EASEMENTS IN THEIR ENTIRETY

BEING A SUBDIVISION OF PORTIONS OF SECTION 8 TOWNSHIP 18 RANGE 20 CONGRESS TOWNSHIP IN THE COUNTY OF MORROW, STATE OF OHIO.



NOTE:
 1. REAR LOT PINS WERE NOT SET AT THE REAR OF LOTS 1 INCLUSIVE.
 2. WITNESS POINTS WERE SET AS SHOWN & 150' FROM THE FRONT LOT CORNER, EXCEPT WHERE NOTED.
 3. THE LAKE LINE SHOWN IS FOR A NORMAL WATER SURFACE AT ELEVATION 1205 BASED UPON APRIL 1971 TOPOGRAPHY COMPILED BY HENDERSON AERIAL SURVEYS OF OHIO.

PRIVATE STREETS EXCEPT WHERE NOTED



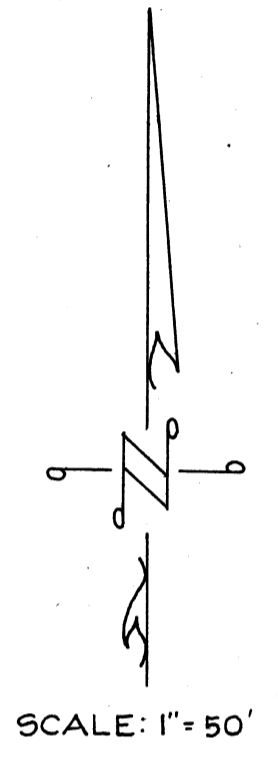
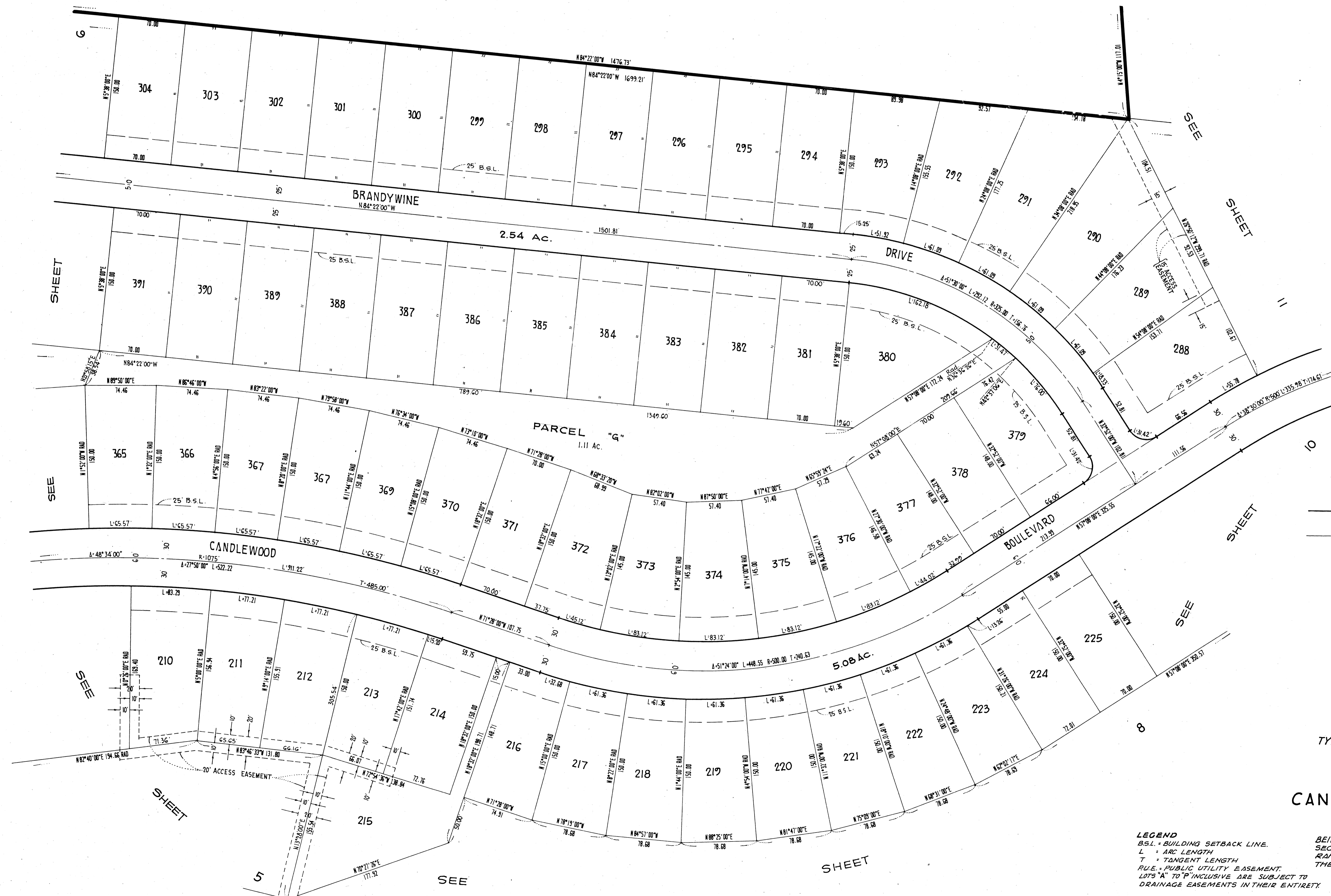
THE STREETS WITHIN THE SUBDIVISION ARE RESERVED FOR THE USE OF ALL PUBLIC UTILITY COMPANIES.

TYPICAL FRONT AND SIDYARD SETBACK AND P.U.E. DETAIL (NO SCALE)

CANDLEWOOD LAKE UNIT No 2

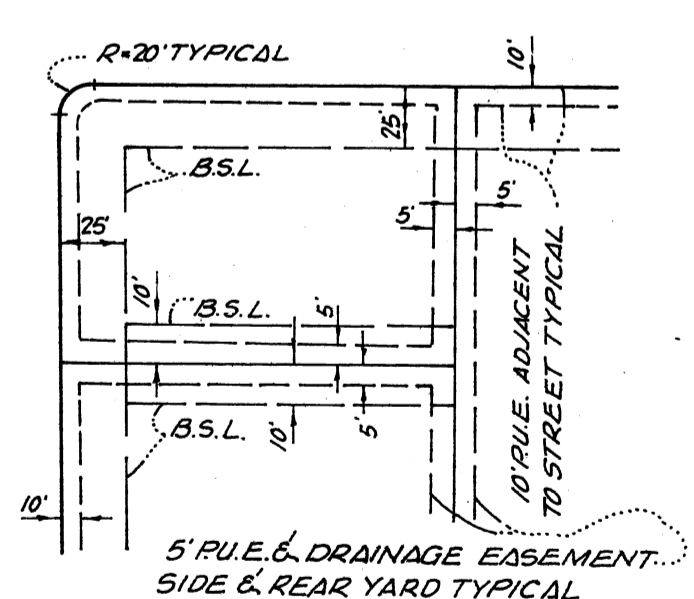
LEGEND
 B.S.L. = BUILDING SETBACK LINE.
 L = ARC LENGTH
 T = TANGENT LENGTH
 P.U.E. = PUBLIC UTILITY EASEMENT.
 LOTS "A" TO "P" INCLUSIVE ARE SUBJECT TO DRAINAGE EASEMENTS IN THEIR ENTIRETY.

BEING A SUBDIVISION OF PORTIONS OF SECTION 8 TOWNSHIP 18 RANGE 20 CONGRESS TOWNSHIP IN THE COUNTY OF MORROW, STATE OF OHIO.



NOTE:
 1. REAR LOT PINS WERE NOT SET AT THE REAR OF LOTS INCLUSIVE.
 2. WITNESS POINTS WERE SET AS SHOWN & 150' FROM THE FRONT LOT CORNER, EXCEPT WHERE NOTED.
 3. THE LAKE LINE SHOWN IS FOR A NORMAL WATER SURFACE AT ELEVATION 1205 BASED UPON APRIL 1971 TOPOGRAPHY COMPILED BY HENDERSON AERIAL SURVEYS OF OHIO.

PRIVATE STREETS EXCEPT WHERE NOTED



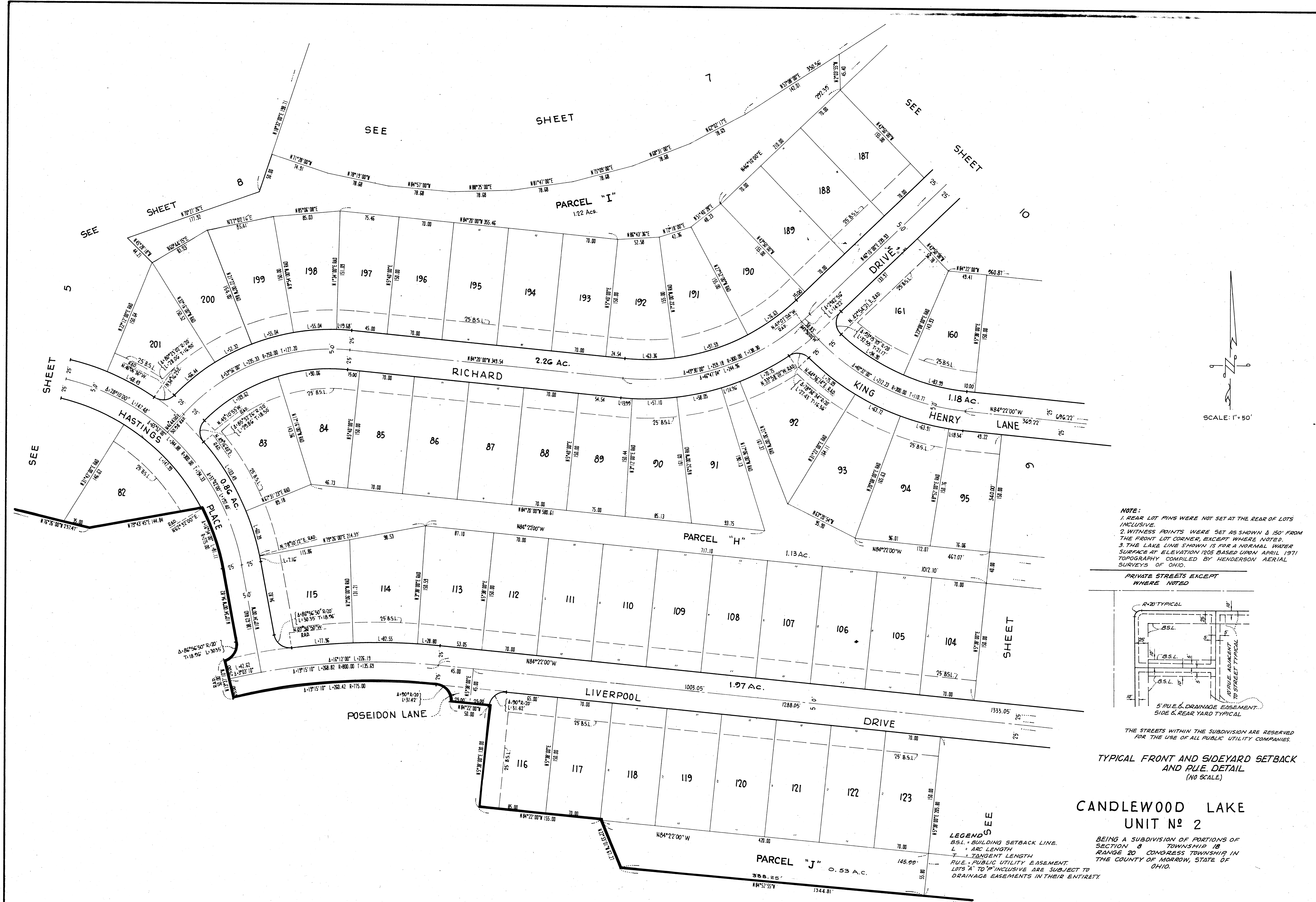
THE STREETS WITHIN THE SUBDIVISION ARE RESERVED FOR THE USE OF ALL PUBLIC UTILITY COMPANIES.

TYPICAL FRONT AND SIDERYARD SETBACK AND P.U.E. DETAIL (NO SCALE)

CANDLEWOOD LAKE UNIT # 2

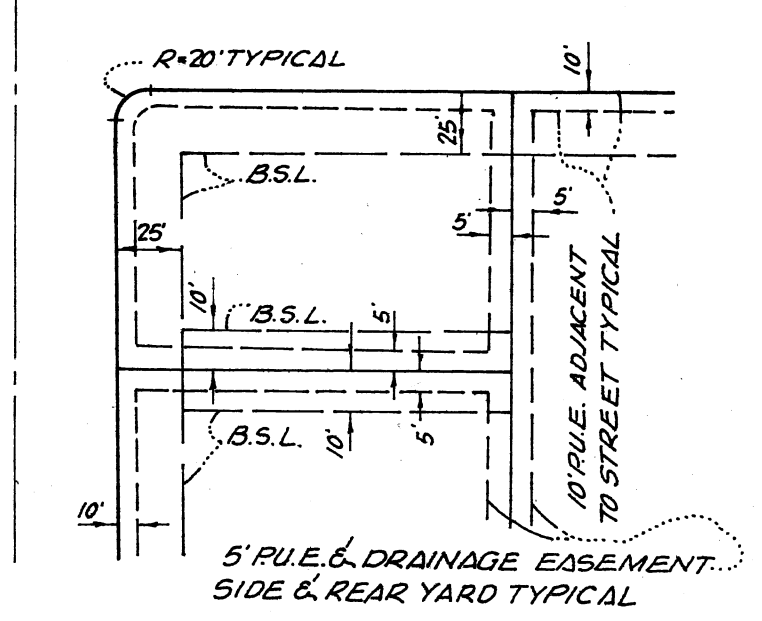
BEING A SUBDIVISION OF PORTIONS OF SECTION 8 TOWNSHIP 18 RANGE 20 CONGRESS TOWNSHIP IN THE COUNTY OF MORROW, STATE OF OHIO.

LEGEND
 B.S.L. = BUILDING SETBACK LINE.
 L = ARC LENGTH
 T = TANGENT LENGTH
 P.U.E. = PUBLIC UTILITY EASEMENT.
 LOTS "A" TO "P" INCLUSIVE ARE SUBJECT TO DRAINAGE EASEMENTS IN THEIR ENTIRETY.



NOTE:
 1. REAR LOT PINS WERE NOT SET AT THE REAR OF LOTS INCLUSIVE.
 2. WITNESS POINTS WERE SET AS SHOWN & 150' FROM THE FRONT LOT CORNER, EXCEPT WHERE NOTED.
 3. THE LAKE LINE SHOWN IS FOR A NORMAL WATER SURFACE AT ELEVATION 1205 BASED UPON APRIL 1971 TOPOGRAPHY COMPILED BY HENDERSON AERIAL SURVEYS OF OHIO.

PRIVATE STREETS EXCEPT WHERE NOTED



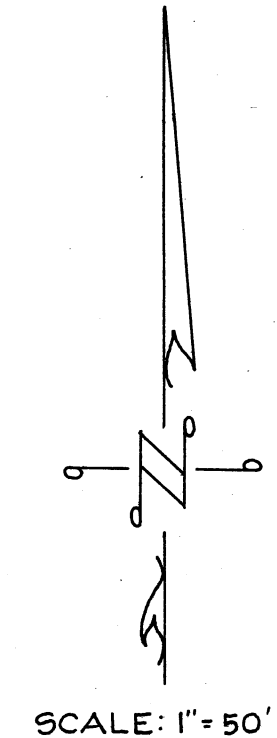
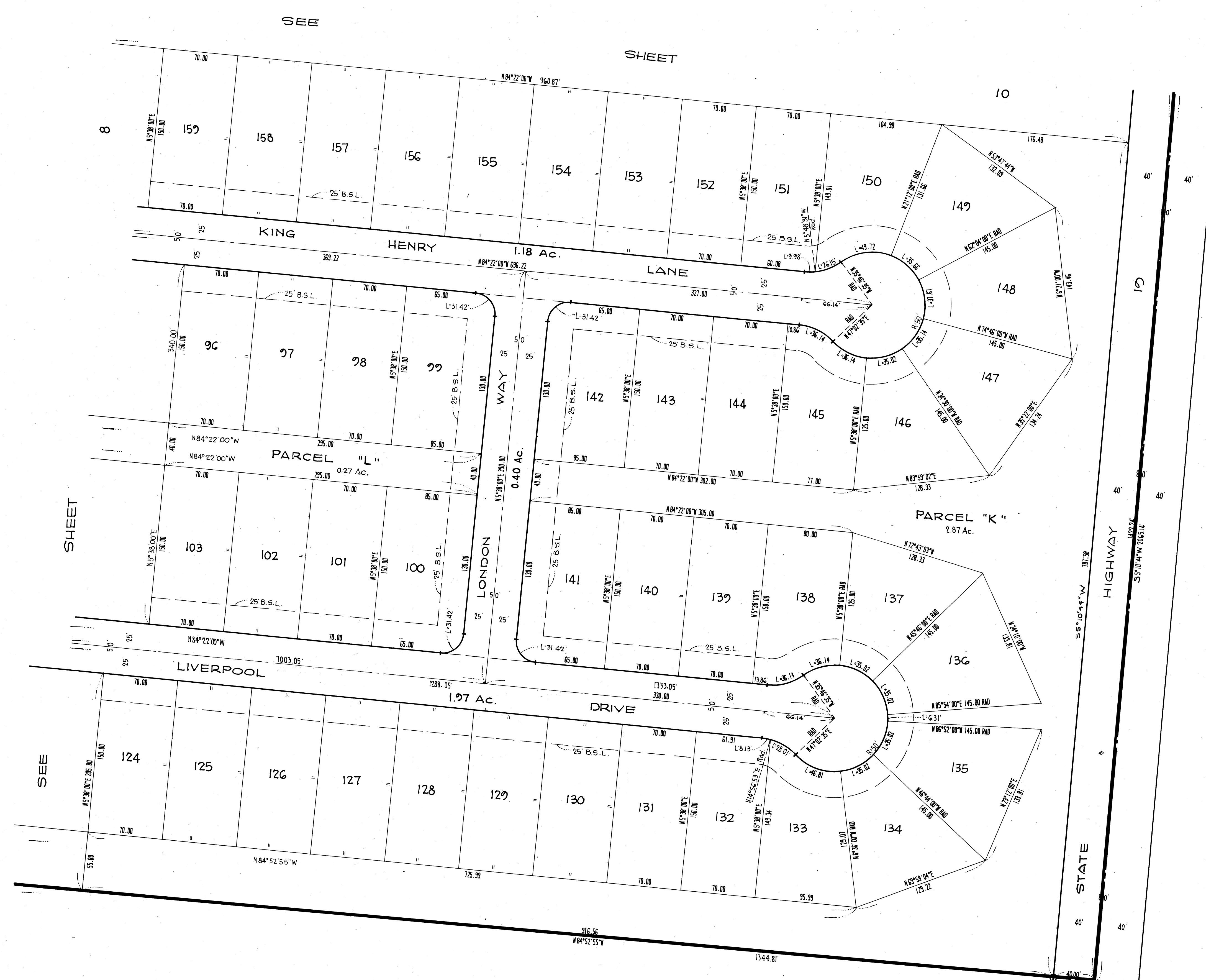
THE STREETS WITHIN THE SUBDIVISION ARE RESERVED FOR THE USE OF ALL PUBLIC UTILITY COMPANIES.

TYPICAL FRONT & SIDEYARD SETBACK AND P.U.E. DETAIL (NO SCALE)

CANDLEWOOD LAKE UNIT No. 2

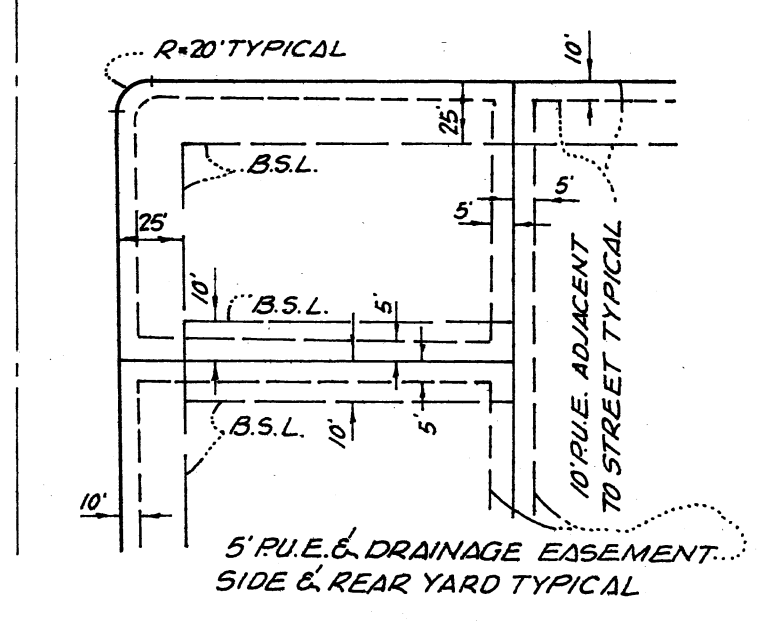
BEING A SUBDIVISION OF PORTIONS OF SECTION 8 TOWNSHIP 18 RANGE 20 CONGRESS TOWNSHIP IN THE COUNTY OF MORROW, STATE OF OHIO.

LEGEND
 SEE
 B.S.L. = BUILDING SETBACK LINE.
 B.S.L. = BUILDING SETBACK LINE.
 L = ARC LENGTH
 T = TANGENT LENGTH
 P.U.E. = PUBLIC UTILITY EASEMENT.
 LOTS "A" TO "P" INCLUSIVE ARE SUBJECT TO DRAINAGE EASEMENTS IN THEIR ENTIRETY



NOTE:
 1. REAR LOT PINS WERE NOT SET AT THE REAR OF LOTS INCLUSIVE.
 2. WITNESS POINTS WERE SET AS SHOWN & 150' FROM THE FRONT LOT CORNER, EXCEPT WHERE NOTED.
 3. THE LAKE LINE SHOWN IS FOR A NORMAL WATER SURFACE AT ELEVATION 1205 BASED UPON APRIL 1971 TOPOGRAPHY COMPILED BY HENDERSON AERIAL SURVEYS OF OHIO.

PRIVATE STREETS EXCEPT WHERE NOTED



THE STREETS WITHIN THE SUBDIVISION ARE RESERVED FOR THE USE OF ALL PUBLIC UTILITY COMPANIES.

TYPICAL FRONT AND SIDEYARD SETBACK AND P.U.E. DETAIL (NO SCALE)

CANDLEWOOD LAKE UNIT No 2

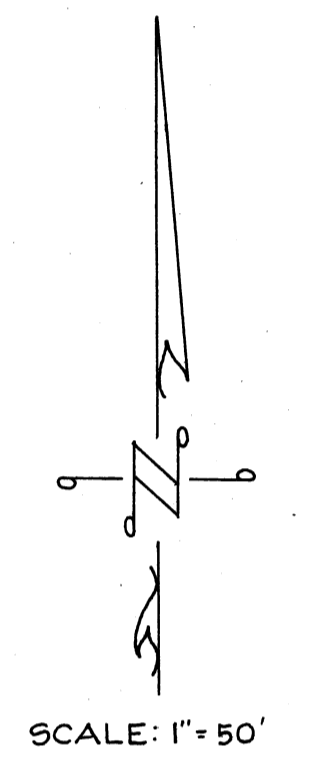
LEGEND
 B.S.L. - BUILDING SETBACK LINE.
 L - ARC LENGTH
 T - TANGENT LENGTH
 P.U.E. - PUBLIC UTILITY EASEMENT.
 LOTS "A" TO "P" INCLUSIVE ARE SUBJECT TO DRAINAGE EASEMENTS IN THEIR ENTIRETY.

BEING A SUBDIVISION OF PORTIONS OF SECTION 8 TOWNSHIP 18 RANGE 20 CONGRESS TOWNSHIP IN THE COUNTY OF MORROW, STATE OF OHIO.

SEE SHEET 11

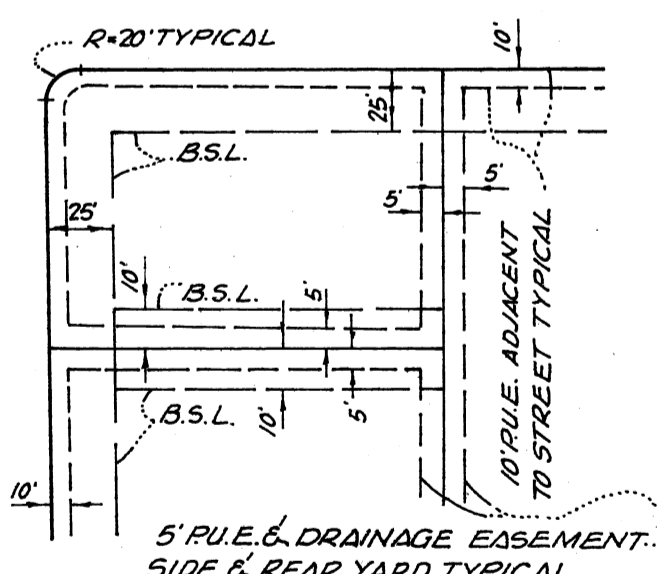
11

SEE SHEET 7
BRANDYWINE DRIVE
SEE SHEET 7
CANDLEWOOD DRIVE
SEE SHEET 7



NOTE:
 1. REAR LOT PINS WERE NOT SET AT THE REAR OF LOTS INCLUSIVE.
 2. WITNESS POINTS WERE SET AS SHOWN & 150' FROM THE FRONT LOT CORNER, EXCEPT WHERE NOTED.
 3. THE LAKE LINE SHOWN IS FOR A NORMAL WATER SURFACE AT ELEVATION 1205 BASED UPON APRIL 1971 TOPOGRAPHY COMPILED BY HENDERSON AERIAL SURVEYS OF OHIO.

PRIVATE STREETS EXCEPT WHERE NOTED



THE STREETS WITHIN THE SUBDIVISION ARE RESERVED FOR THE USE OF ALL PUBLIC UTILITY COMPANIES.
TYPICAL FRONT AND SIDEYARD SETBACK AND P.U.E. DETAIL (NO SCALE)

CANDLEWOOD LAKE UNIT No 2

LEGEND
 B.S.L. = BUILDING SETBACK LINE.
 L = ARC LENGTH
 T = TANGENT LENGTH
 P.U.E. = PUBLIC UTILITY EASEMENT.
 LOTS "A" TO "P" INCLUSIVE ARE SUBJECT TO DRAINAGE EASEMENTS IN THEIR ENTIRETY.

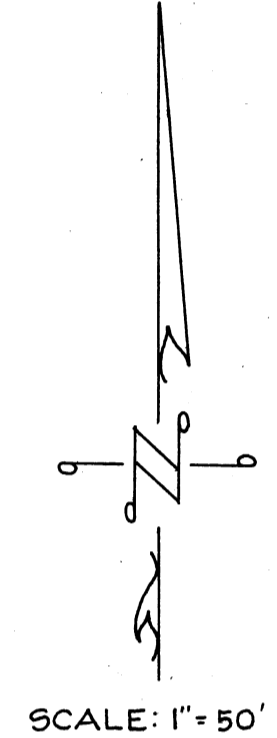
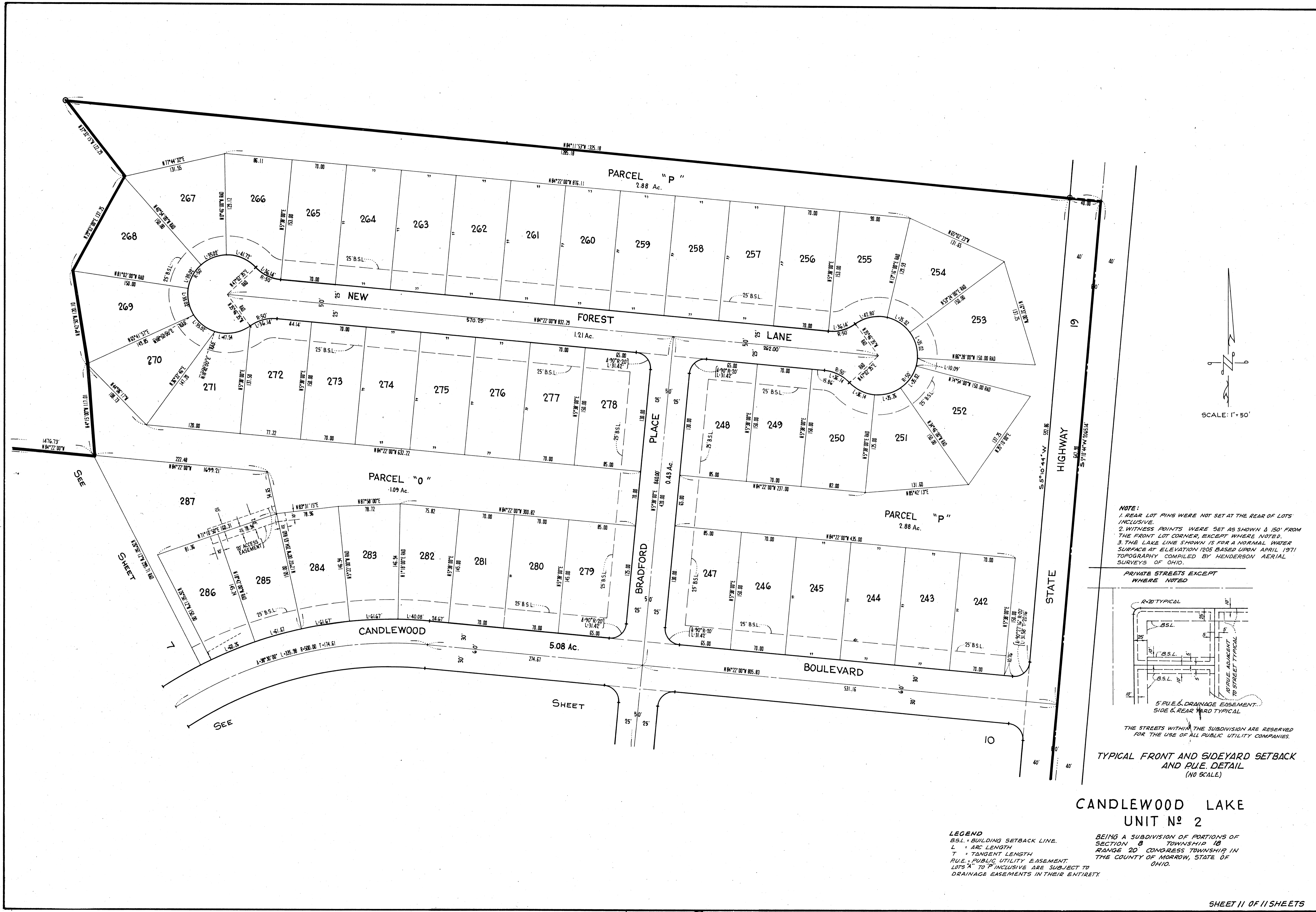
BEING A SUBDIVISION OF PORTIONS OF SECTION 8 TOWNSHIP 18 RANGE 20 CONGRESS TOWNSHIP IN THE COUNTY OF MORROW, STATE OF OHIO.

SEE SHEET 8

SEE

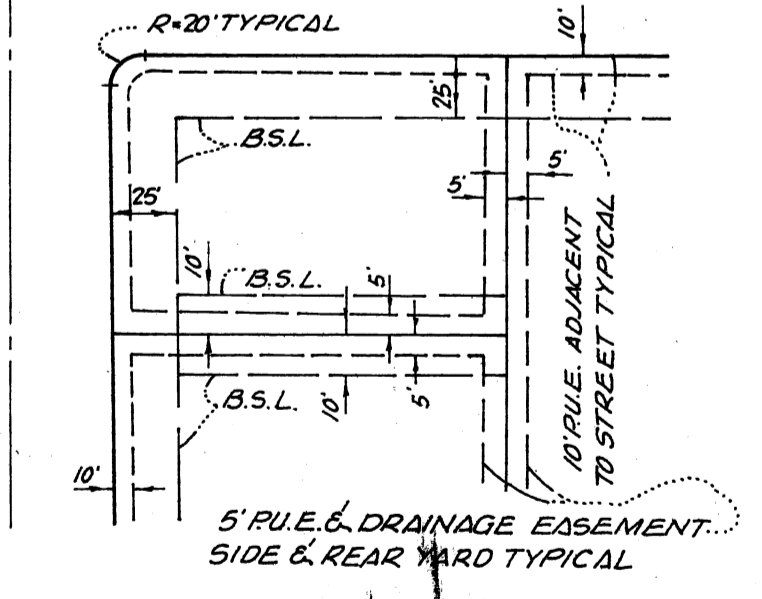
SHEET

9



NOTE:
 1. REAR LOT PINS WERE NOT SET AT THE REAR OF LOTS INCLUSIVE.
 2. WITNESS POINTS WERE SET AS SHOWN & 150' FROM THE FRONT LOT CORNER, EXCEPT WHERE NOTED.
 3. THE LAKE LINE SHOWN IS FOR A NORMAL WATER SURFACE AT ELEVATION 1205 BASED UPON APRIL 1971 TOPOGRAPHY COMPILED BY HENDERSON AERIAL SURVEYS OF OHIO.

PRIVATE STREETS EXCEPT WHERE NOTED



THE STREETS WITHIN THE SUBDIVISION ARE RESERVED FOR THE USE OF ALL PUBLIC UTILITY COMPANIES.

TYPICAL FRONT AND SIDEYARD SETBACK AND P.U.E. DETAIL
(NO SCALE)

**CANDLEWOOD LAKE
 UNIT No 2**

LEGEND
 B.S.L. = BUILDING SETBACK LINE.
 L = ARC LENGTH
 T = TANGENT LENGTH
 P.U.E. = PUBLIC UTILITY EASEMENT.
 LOTS "A" TO "P" INCLUSIVE ARE SUBJECT TO DRAINAGE EASEMENTS IN THEIR ENTIRETY

BEING A SUBDIVISION OF PORTIONS OF SECTION 8 TOWNSHIP 10 RANGE 20 CONGRESS TOWNSHIP IN THE COUNTY OF MORROW, STATE OF OHIO.